

Global Engagement

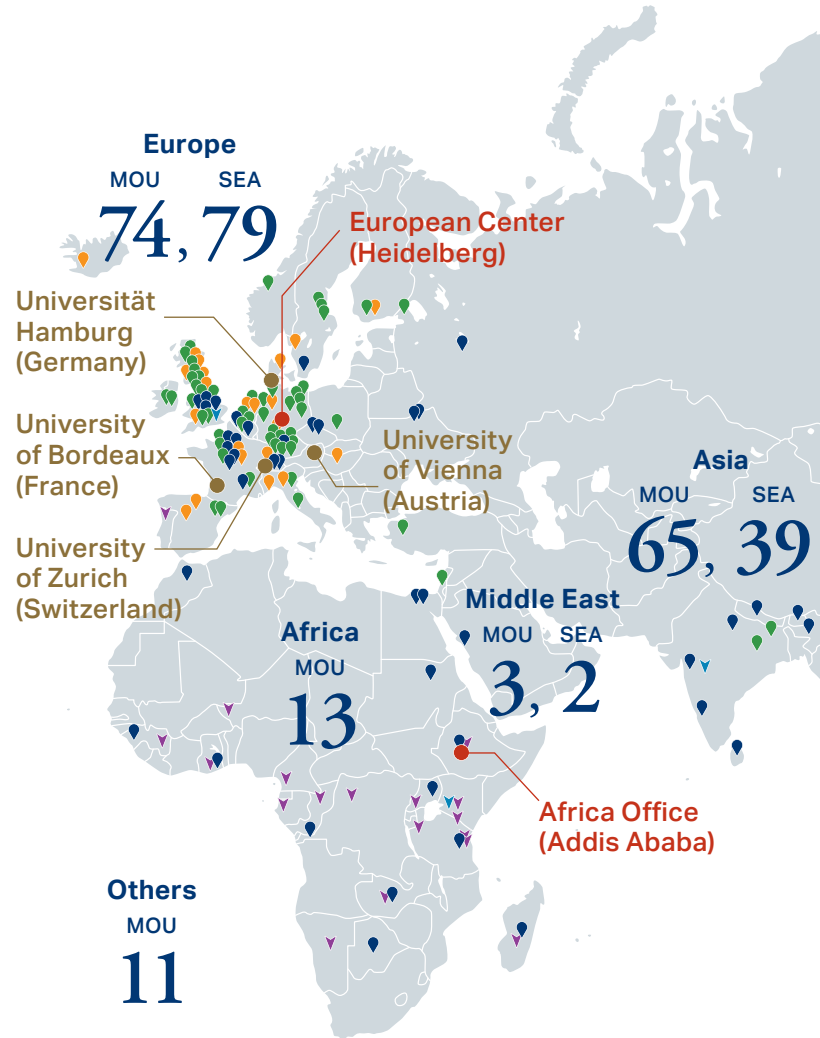
International Partners/Overseas Offices and Facilities

Kyoto University connects with the global community in diverse ways: through academic cooperation and partnerships, its overseas facilities, multilateral networks, and its alumni associations in various countries. International partners are an essential asset to the university, contributing to the development of its research and education endeavors and enriching its activities with multicultural diversity.

Research fieldwork sites at locations around the world are also a part of the university's international network, providing a foundation for local engagement and cooperation.

The university's overseas offices serve as its bridges to key regions around the world, implementing international outreach initiatives that capitalize on the unique qualities of those regions and providing support for researchers stationed overseas. Currently, the university has overseas centers in Heidelberg (Germany), Bangkok (Thailand), and Washington, DC (USA).

Kyoto University is itself an international hub where researchers from around the world gather to share and disseminate knowledge, promote research and technology transfer, and above all, connect with people who share their passions.



See pp. 11–12 of this brochure and Facts and Figures pp. 7–10, 12–15

Overseas Offices and Facilities

65

On-site Laboratories

11

Overseas Alumni Associations

31

Strategic Partnerships

5

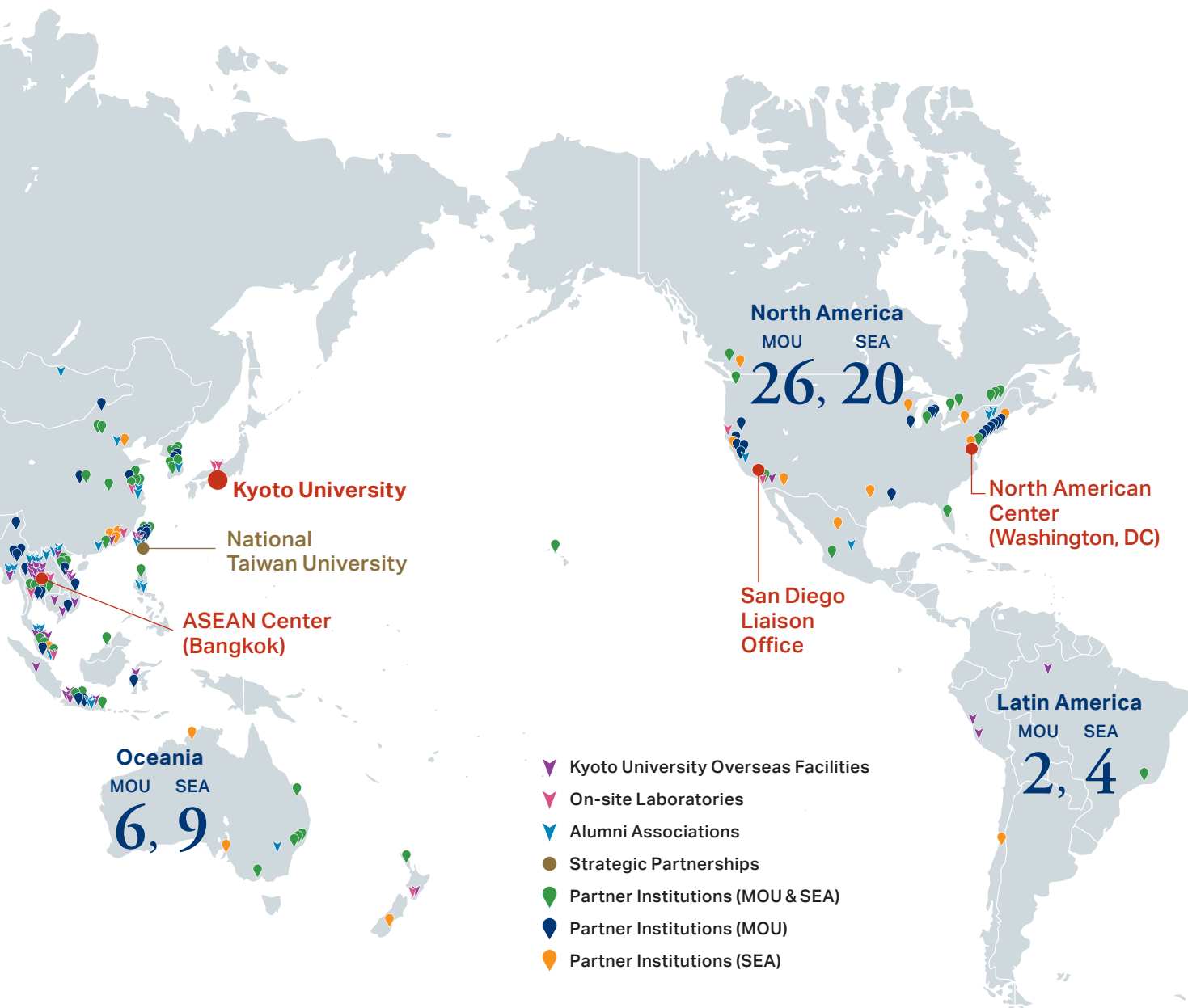
University-level Memoranda (MOU)

200

Student Exchange Agreements (SEA)

153

(As of April 1, 2023)



Alumni Associations

Kyoto University maintains an expanding network of former students, researchers, and academic staff through its alumni associations. Currently, there are 134 alumni associations in Japan and overseas.

The university promotes networking opportunities among its alumni around the world, and each regional association also plays a key role—bringing together people with shared personal experiences and a shared affection for their alma mater.

www.kyoto-u.ac.jp/en/alumni



Global Engagement

Strategic Partnerships (SPs)

What? What are "Strategic Partners?"

"Strategic Partners" are institutions with which Kyoto University seeks to build on existing collaboration efforts to further develop interdisciplinary research collaboration, collaboration in new fields, and personnel mobility. The partnerships are initiated through executive-level relations between Kyoto University and world-leading institutions with which cooperation and exchange agreements have already been concluded.



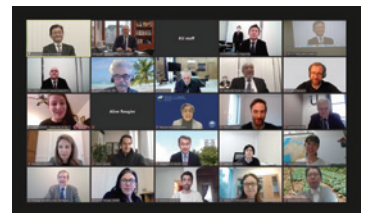
Joint Workshop in Medicine with the University of Zurich (Nov. 2019)

Why? Purposes and Expected Outcomes

1. Further development of sustained research collaboration, with a focus on interdisciplinary research and research in new fields.
2. Increased opportunities to acquire external funding for international research collaboration.
3. Development of bilateral collaboration into multilateral collaboration.
4. Facilitation of comprehensive cooperative activities with the partners, including educational collaboration, and student and personnel mobility.
5. Enhancement of international competitiveness.



Conclusion of the SP MOU with National Taiwan University (Aug. 2020)



4th International Symposium with University of Bordeaux: "Establishing Trilateral Collaboration between France, Japan, and Africa" (Feb. 2021)

How? Strategic Partnership Activities to Date

| | Activities Before Strategic Partnership | | | | Strategic Partnership | Activities After Strategic Partnership | | | |
|-----------------------------------|------------------------------------------------|------------------------------------------------|----------------------------------------------------|------------------------------------------|-----------------------|----------------------------------------------------------------------|------------------------------------------|-----------------------------------------|-----------------------------------------|
| University of Bordeaux | | 2014 1 st Symposium & MOU | 2015 2 nd Symposium & SEA | 2017 3 rd Symposium | 2019 | 2019 Conclusion of SP MOU | 2020 4 th Symposium | | 2023 Research funding by KU |
| University of Vienna | 1993 MOU | 1997 SEA | 1998–2017 Researcher Exchange Program | 2018 Workshop | 2019 | 2019 Conclusion of SP MOU / 2 nd Joint Workshop | | | 2022 → Joint research funding |
| University of Zurich | 2013 1 st Symposium & MOU | 2014 SEA | 2016 2 nd Symposium | 2019 Workshop | 2020 | 2020 Conclusion of SP MOU | 2021 Joint research funding | 2022 → Research funding by KU | 2023 Joint Symposium |
| Universität Hamburg | | 2016 Workshop | 2017 1 st Symposium MOU & SEA | 2018 2 nd Symposium | 2020 | 2020 Conclusion of SP MOU | | 2021 → Joint research funding | |
| National Taiwan University | 2005 MOU & SEA | 2013 1 st Symposium | 2014 Faculty Exchange Program | 2014 2 nd Symposium | 2020 | 2020 Conclusion of SP MOU | 2021 SP Matching Event | 2021 → Joint research funding | |

On-site Laboratory Initiative

“On-site laboratories” are locally managed laboratories established collaboratively by Kyoto University faculties/departments and overseas partners. To date, eleven on-site laboratories have been established worldwide. The initiative aims to promote world-leading cutting-edge research, explore new research areas, and promote interdisciplinary research. The labs’ promotion of international research exchange has a positive ripple effect on the university’s activities, leading to the launch of new double degree programs with partner universities, increasing its recruitment of talented international students, and promoting academia-industry collaboration. Through the efforts of the on-site laboratories, Kyoto University seeks to strengthen the institutional infrastructure that enables it to be a key player in international academia and ranked among the world’s leading universities.

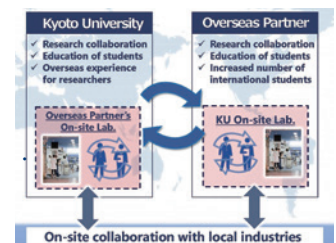
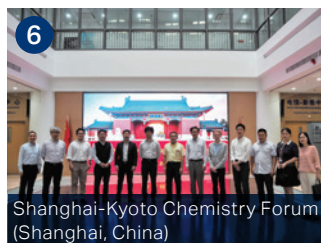
www.kyoto-u.ac.jp/en/about/operation/designated/on-site-laboratories



On-site Laboratories

- 1 Kyoto University Research Center San Diego, USA
- 2 IFOM-KU Joint Research Laboratory, Japan/Italy
- 3 Kyoto University-Tsinghua University Cooperative Research and Education Center for Environmental Technology, China
- 4 Kyoto University On-site Laboratory at Mahidol University for Educational and Research Collaboration in Environmental Studies, Thailand
- 5 Smart Materials Research Center, Thailand
- 6 Kyoto University Shanghai Lab, China
- 7 iPS Cell Research Center at Gladstone Institutes, USA
- 8 Center for Integrated Biosystems, Taiwan
- 9 Quantum Nano Medicine Research Center, Japan/USA
- 10 Laboratory for Green Porous Materials, Singapore
- 11 Center for Integrated Data-Material Sciences (iDM), New Zealand

See Facts and Figures pp. 12–13



Global Engagement

News

On-site Lab News

1st Joint Symposium of Kyoto University's Three North American On-site Labs: Transformative Innovations in Medical and Life Sciences

Kyoto University's three North American-based on-site laboratories (Kyoto University Research Center San Diego, the iPS Cell Research Center at Gladstone Institutes, and the Quantum Nano Medicine Research Center) held a joint symposium in collaboration with the university's International Strategy Office at the Sanford Consortium for Regenerative Medicine on the campus of the University of California San Diego (UCSD) on February 28, 2023. The symposium aimed to share the outcomes of outstanding cutting-edge research in the field of medical and life sciences, provide participants with opportunities to expand their academic networks, and promote innovation. Researchers from Japan and the US delivered presentations in sessions focusing on the themes of "stem cells and cell reprogramming," "quantum science, nanomedicine, and radiation therapy," and "cancer immunotherapy." Keynote speeches were delivered by Dr. Shinya Yamanaka (CiRA) and Dr. Mitinori Saitou (ASHBi). The interdisciplinary symposium was conducted in a hybrid format (on-site and online) and attracted over 700 participants from more than 13 countries, including researchers, students, government officials, industry representatives, and Kyoto University alumni.



Strategic Partnership News

The Kyoto University-University of Zurich Strategic Partnership Joint Symposium 2023: Data Science and Social Impact

The Kyoto University-University of Zurich Strategic Partnership Joint Symposium 2023: Data Science and Social Impact was held at Kyoto University on March 7–8, 2023. The two universities have been actively promoting academic exchange and collaboration since concluding an institutional cooperation agreement in 2013, and the collaboration was greatly bolstered by a Strategic Partnership Agreement in July 2020.

The symposium featured a wide range of presentations and cross-disciplinary discussions on the collaborative research and education exchange pursued by the two institutions in the fields of regenerative medicine, law, plant science, and medical data, as well as wide-ranging discussions on future collaboration and practices for fostering the next generation of researchers. The symposium was the first such event in several years to be held "in person," as most events have been held online since the outbreak of the COVID-19 pandemic. Approximately 100 people participated in the two-day event, including participants from Kyoto University, the University of Zurich, and other institutions.

